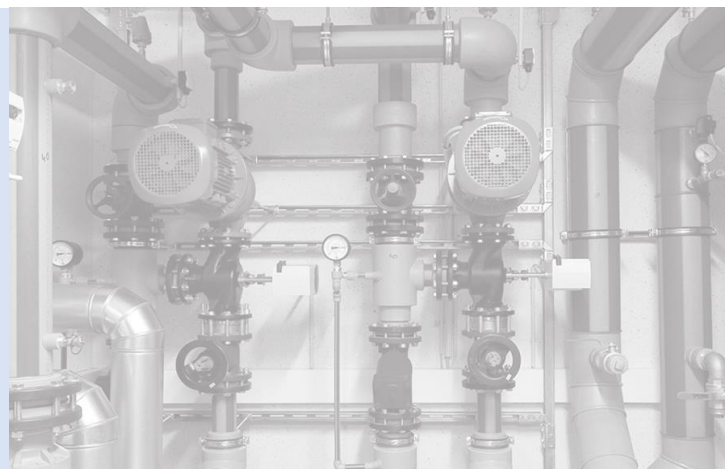


# HOSE TEST RIG DATASHEET



Specialists in Manufacturing, Supplying and  
Renting Hydraulic Equipment

## Company Profile

GD Hydraulics are a manufacturer who specialise in sale, service, rental and repair of Hydraulic and Gas Pressure Testing, Flushing & Control Systems.

G-D Hydraulics offer equipment which includes:

- **Air Operated Tensioner Pumps**
- **Air Operated Hydraulic Power Packs (HPUs)**
- **Hose Test Rigs**
- **Cycle Test Rigs**
- **Valve Test Benches**
- **Flushing Rigs**
- **Hydraulic Power Units – Electric Driven**
- **Hydraulic Control Panels**
- **Pressure Logging Equipment**
- **Manifolds**
- **Hose Reels & Hoses**

Our standard products are relevant over numerous industry sectors and can be used for a wide number of applications. We also offer a custom built manufacture service for those jobs that need specific and bespoke requirements.

Our manufacturing facility in Manchester allows us to build and test all equipment to ensure it reaches our customers in top quality condition.

We are committed to manufacturing the best equipment possible to allow our customers operations to run as smoothly as possible.

## Specialists in Manufacturing, Supplying and Renting Hydraulic Equipment

### Company Information:

#### **GD Hydraulics**

Unit 6B Wilsons Park,  
Wilsons Industrial Estate,  
Monsall,  
Manchester,  
M40 8WN

Phone: +44 161 643 6768

Email: [sales@g-dhydraulics.com](mailto:sales@g-dhydraulics.com)

## Contents

02 – Eco and Maxi Hose Test Rig Specification's

03 – Eco and Maxi Hose Test Rig Part Number's

04 – Cycle Test Rig Specification's

05 – Cycle Test Rig Part Numbers

## HOSE & CYCLE TEST RIGS – ECO & MAXI RANGE

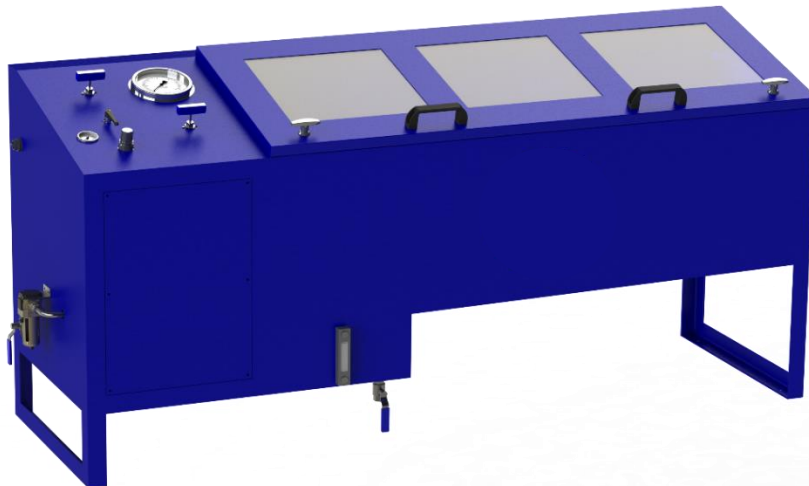
Test hoses safely with our Hose & Cycle Test Rigs. All ranges are built with a full safety enclosure as standard, to allow test pressures of up to 55,500 psi (3,828 Bar) to be generated. All controls are panel mounted ensuring easy and efficient operation.

The standard cabinet size range is perfect for everyday testing of hoses and other equipment, whilst the Maxi range is manufactured to allow for larger hose coils and equipment to be tested and is suitable for pallet loading.

Whilst marketed for testing hoses, the range can be used for pressure testing any equipment in the safety enclosure, ensuring the most versatile and safe rig on the market.

### Typical Applications

- ✓ Proof Testing
- ✓ Burst Testing
- ✓ Automatic Test Rigs
- ✓ Cycle Testing
- ✓ General Pressure Testing



### Further Services

- ✓ Bespoke designed test rigs to suit customer requirements
- ✓ Onsite Installation
- ✓ Full ongoing aftersales support
- ✓ Onsite consultation to ensure the most suitable rig is offered
- ✓ Full training both at our premises and onsite

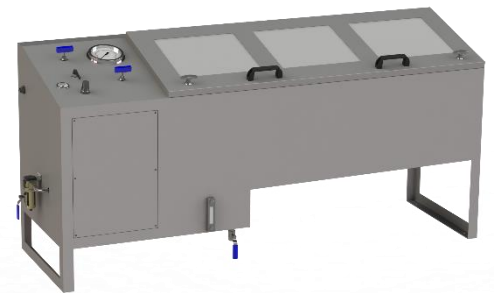


## Standard Range

Model Number	Max Test Pressure (100psi/6.9 Bar Air)		Max Flow Rate (per min)	
	PSI	BAR	Litres	Cu. Inches
HTR-30	3,000	207	7.3	445.5
HTR-70	7,000	483	3.0	180.0
HTR-105	10,500	724	2.0	119.0
HTR-195	19,500	1345	1.2	70.2
HTR-280	28,000	1931	0.7	44.6
HTR-440	44,000	3034	0.4	25.9
HTR-555	55,500	3828	0.36	22.0

### Equipment included as standard:

Painted Mild Steel	✓	Pump Pressure Regulator	✓
Test Enclosure	✓	Pump Start/Stop Valve	✓
33L Tank	✓	Pump Air Pressure Gauge	✓
Tank Isolation Valve	✓	Test Pressure Gauge	✓
Pump Strainer	✓	Pressure Release Valve	✓
Air Driven Pump	✓	Test Connection Bulkhead	✓



## Maxi Range

Model Number	Max Test Pressure (100psi/6.9 Bar Air)		Max Flow Rate (per min)	
	PSI	BAR	Litres	Cu. Inches
MHTR-30	3,000	207	7.3	445.5
MHTR-70	7,000	483	3.0	180.0
MHTR-105	10,500	724	2.0	119.0
MHTR-195	19,500	1345	1.2	70.2
MHTR-280	28,000	1931	0.7	44.6
MHTR-440	44,000	3034	0.4	25.9
MHTR-555	55,500	3828	0.36	22.0

### Equipment included as standard:

Painted Mild Steel	✓	Pump Pressure Regulator	✓
Test Enclosure	✓	Pump Start/Stop Valve	✓
70L Tank	✓	Pump Air Pressure Gauge	✓
Tank Isolation Valve	✓	Test Pressure Gauge	✓
Pump Strainer	✓	Pressure Release Valve	✓
Air Driven Pump	✓	Test Connection Bulkhead	✓



### Optional Extras for All Ranges

Stainless Steel Frame & Enclosure	-SS
Datalogging System	-T
Automatic Cycle Test System	-C
Low Pressure Prefill Pump	-PF
Return Line	-R
Air Blow Down	-B
Automatic Pressure Dump Valve	-DV

### Code

-SS
-T
-C
-PF
-R
-B
-DV

## HOSE & CYCLE TEST RIGS – CYCLE RANGE

The Cycle Range test rigs are ideal for carrying out the repetitive pressure testing of equipment. Whether it be to test equipment to destruction or prove it lasts for a set amount of cycles, the inbuilt PLC can be set to automatically run a test. Variable settings include maximum and minimum pressure of a cycle, time pressure is held every cycle, % of set pressure which dictates pass/fail and number of cycles per test. At the end of each test the touch screen HMI will indicate Pass or Fail and all information can be extracted using a USB. The cycle test rig range also has a safety door locking system as standard, so whenever there is pressure in the system the door will automatically lock until the pressure is released.

Furthermore, the Cycle range has all the features of the ECO and Maxi Ranges and can carry out manual hydrastatic proof, burst and cycle testing up to 55,500 psi (3,828 Bar). The cycle range software and equipment can be added as an extra to both the ECO and MAXI ranges but is also available in a standard vertical configuration to allow for cycle testing of equipment such as cylinders and manifolds as well as hoses.

### Typical Applications

- ✓ Proof Testing
- ✓ Burst Testing
- ✓ Automatic Test Rigs
- ✓ Cycle Testing
- ✓ General Pressure Testing



### Key Features

- ✓ Automatic Cycle Testing Software
- ✓ Safety Door Locking System



## Standard Range

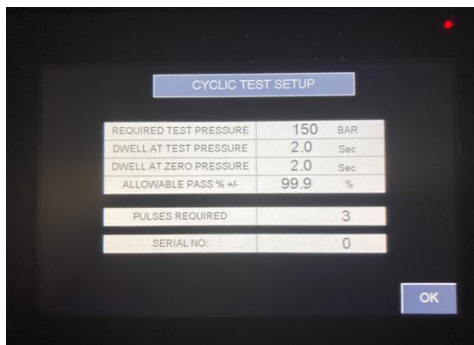
Model Number	Max Test Pressure (100psi/6.9 Bar Air)		Max Flow Rate (per min)	
	PSI	BAR	Litres	Cu. Inches
CTR-30	3,000	207	7.3	445.5
CTR-70	7,000	483	3.0	180.0
CTR-105	10,500	724	2.0	119.0
CTR-195	19,500	1345	1.2	70.2
CTR-280	28,000	1931	0.7	44.6
CTR-440	44,000	3034	0.4	25.9
CTR-555	55,500	3828	0.36	22.0

### Equipment included as standard:

- |                      |   |                            |   |
|----------------------|---|----------------------------|---|
| Painted Mild Steel   | ✓ | Pump Pressure Regulator    | ✓ |
| Test Enclosure       | ✓ | Pump Start/Stop Valve      | ✓ |
| 50L Tank             | ✓ | Pump Air Pressure Gauge    | ✓ |
| Tank Isolation Valve | ✓ | Test Pressure Gauge        | ✓ |
| Pump Strainer        | ✓ | Pressure Release Valve     | ✓ |
| Air Driven Pump      | ✓ | Test Connection Bulkhead   | ✓ |
| Touchscreen HMI      | ✓ | Automatic Cycling Software | ✓ |

### Optional Extras for All Ranges

- |                                   |    |   |
|-----------------------------------|----|---|
| Stainless Steel Frame & Enclosure | SS | ✓ |
| Datalogging System                | T  | ✓ |
| Prefill Pump                      | PF | ✓ |
| Return Line                       | R  | ✓ |
| Air Blow Down                     | B  | ✓ |
| Automatic Pressure Dump Valve     | DV | ✓ |



Automatic Cycle Testing Software



Safety Door Locking System



# GD Hydraulics

Testing & Control

Specialists in Manufacturing, Supplying and  
Renting Hydraulic Equipment